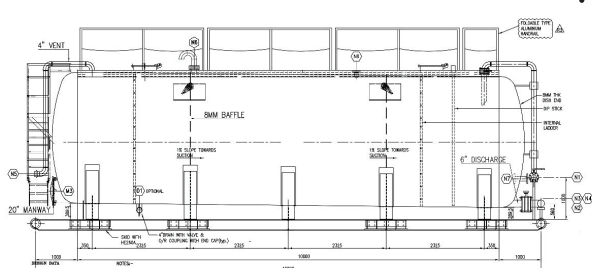
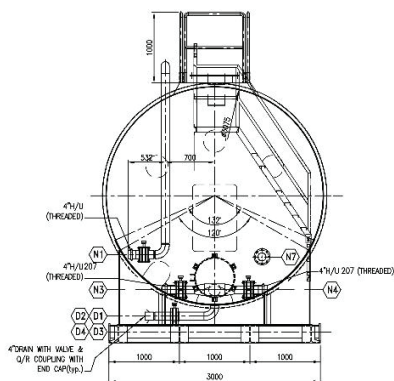




The 500 BBL Offshore Storage Tank is used for storage of drilling, production, completion fluids, base oil, chemicals as well as fuel, brine and other helogenated acid liquids

- Designed & Manufactured : For Storage Application
- Certifying Authority: Bureau Veritas
- Vessel Design Temperature: 205° C (401° F)
- Vessel Design Pressure: 2.06 Barg (40 PSI)
- Sling Angle: 45° Max
- Operational Restriction: Empty Lift Only
- Shell Materials: High Carbon Steel Rolled Plate and Dish Side
- Lifting Points: 4 Lifting Pad Eyes to Top and Integrated Trunnions Into Base for Empty Lifting.
- Lifting Set: Tank Supplied with DNV Type Lifting Sling Set with Bow Shackles Nut and Bolt Type.
- Flow Line & Circulation Line: One 4" 150 LB Flanged Connection. Fitted with 4" Butterfly Valve & Flanged Adapter with 4" Union and Cap 207.
- Suction Line: One 6" 150 LB Flanged Connection. Fitted with 4" Butterfly Valve & Flanged Adapter with 4" 150 LB Flange x 4" Union & Cap 207.
- Vent Line: One 4" 150 LB Flanged Connection. Fitted with 4" Butterfly Valve & Flanged Adapter with 4" Union and Cap 207.
- All Butterfly valves used are Teflon Lined.
- Vent Safety Relief: SS Fort 3" Relief Valve Set at 15 PSI, Vac at 6.2 "hg
- Deck Mounts: Eight Skid Mounted Weld Downs
- Manway: Two 20" Man-way on Top with Ladders
- Clean-out Way: One 20" Clean-out Way at Bottom
- Level Indicator: Fitted with Magnetic Level Indicator Gauge Teflon Lined.
- Service Temperature: -20; +60° C
- Softening Temperature: 100° C
- Walkway: Full Length Top Mounted Walkway with Integrated Collapsible Hand-Rails
- Interior Lining : SW Graphite Filled Vinyl Ester "COR-COTE" is a multifunctional novolac based vinyl ester. It provides resistance to many aromatic and aliphatic solvents, organic and mineral acids, and excellent resistance to thermal degradation. It employs laminar graphite fillers in place of silica-based fillers for applications where exposure to hydrofluoric acids are encountered.
- Exterior Finish: 3 Coat Marine Poly Exterior Coating
- Tare Weight: 18,000 Kg
- External Dimensions: Width - 3.2 M, Length - 12.5 M, Height- Hand Rails Down - 4.1 M, Height - Hand Rails Up: 4.8M



**24/7 DISPATCH: +971 50 9984290 / +966 55 4966855**