



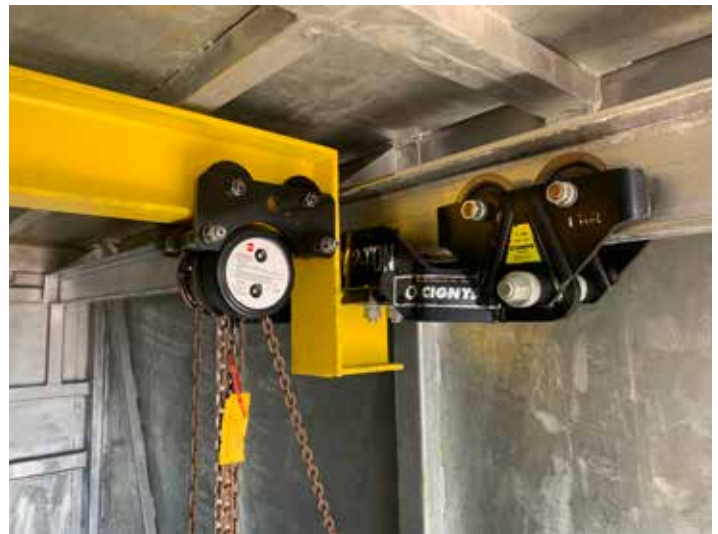
DNV 8' X 20' JOB BOX WITH OVERHEAD 1 TON CHAIN HOIST

▶ COMMON USES

The DNV 8' x 20' Job Box is the industry's all-purpose dry goods container upgraded and customized with shelves, hang pins and lights, etc. 1 ton chain hoist allows user to move heavy objects in and out of unit with ease.

▶ TECHNICAL DATA

OPT 1 DIMENSIONS		L X W X H	
EXTERNAL (MM)	6058 x 2438 x 2591		
EXTERNAL (FT)	20' x 8' x 8'6"		
INTERNAL (MM)	5861 x 2250 x 2213		
INTERNAL (FT)	19'2" x 7'4" x 7'3"		
WEIGHT	KGS	LBS	
TARE	4082	9000	
PAYLOAD	11650	25683	
MAX GROSS WEIGHT (MGW)	15732	34683	
ADDITIONAL FEATURES			
<ul style="list-style-type: none"> • Designed, Constructed, Tested to EN12079-1 / DNV 2.7-1 / SEPCo OPS 0055 / API RP 			



▶ DRAWINGS

