



400 BBL ELECTRIC OPEN TOP MIX TANK

▶ COMMON USES

The 400 BBL Mix Tank is commonly used to mix mud and drilling fluids.

NOTE: The Mix Tank Package includes the 400 bbl Mix Tank, Pump and the Full Length Canopy Top.

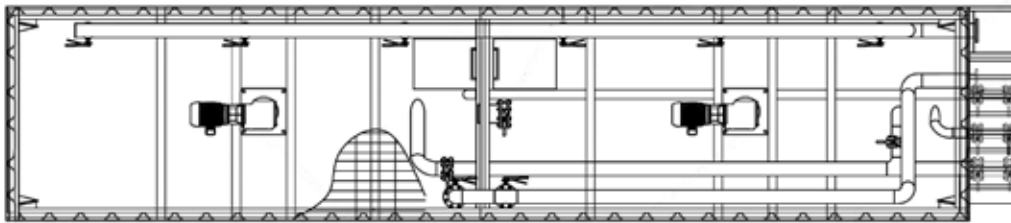
▶ TECHNICAL DATA

DIMENSIONS	L X W X H	
EXTERNAL (MM)	12852 x 2591 x 3429	
EXTERNAL (FT)	42'2" x 8'6" x 11'3"	
EXTERNAL (MM) W/RAILS	12852 x 2591 x 5118	
EXTERNAL (FT) W/RAILS	42'2" x 8'6" x 16'10"	
WEIGHT	KGS	LBS
EMPTY WEIGHT	16329	36000
WEIGHT W/CANOPY	17010	37500
CAPACITY	LITERS	GALS
VOLUME	63595	16800
ADDITIONAL FEATURES		
<ul style="list-style-type: none"> • Skid Mounted, Round Bottom, 4 Point Empty Lift, Removable Tarp Canopy • 2 Compartment (200 bbl each) with Internal Valves to Connect and Over Flow • (2) Class 1 DIV 1 10 HP Electric Mixers; (3) Class 1 DIV 1 120V Led Lights • 4" Gun Line with Nozzles for Rolling Mud/Drilling Fluid, Internal Level Indicators • Exterior Coatings: Zinc Rich Epoxy Primer with Polyurethane Top Coat • Interior Coatings: High-Build Epoxy Lining System 		



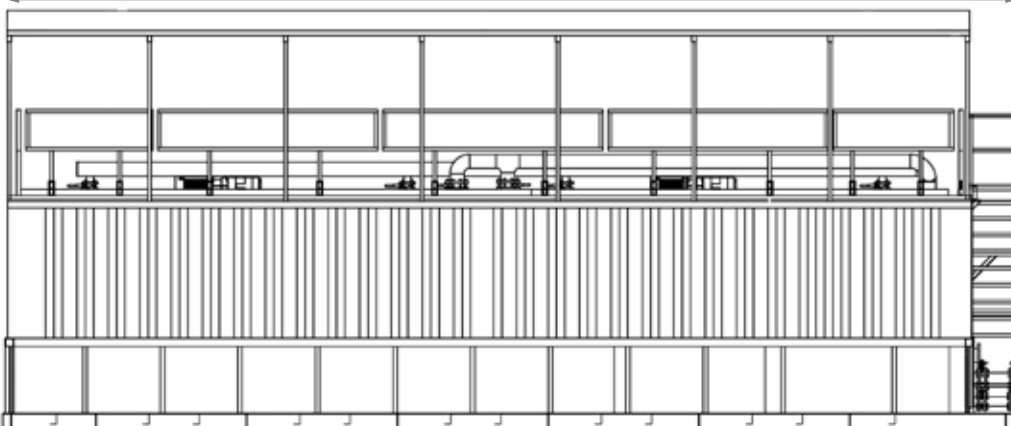
▶ DRAWINGS

TOP VIEW



SIDE VIEW

12852 mm [506"] [42'2"]



5118 mm [201"] [16'10"]
3429 mm [135"] [11'3"]

FRONT VIEW

2591 mm [102"] [8'6"]

