

125 BBL DNV 2.7-1 Stainless Steel Tank



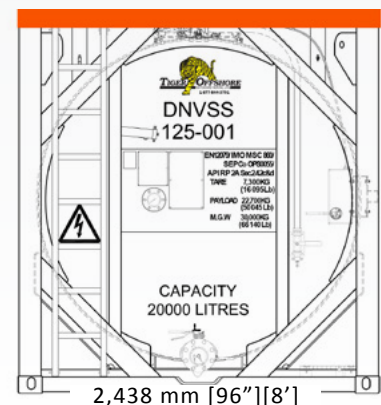
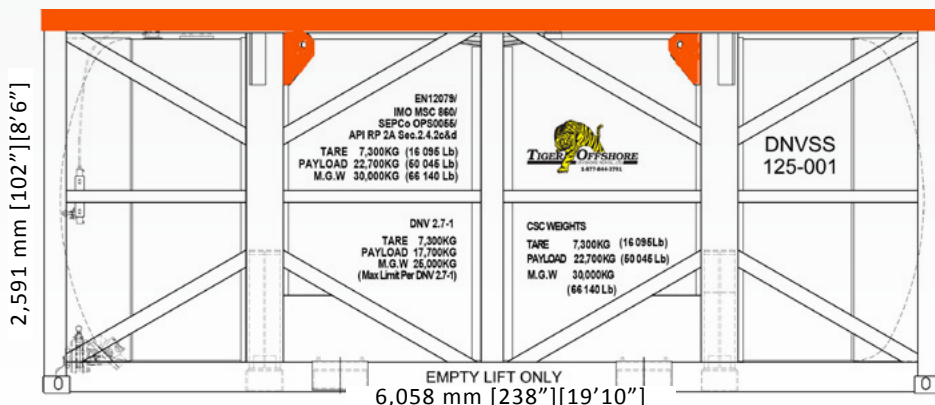
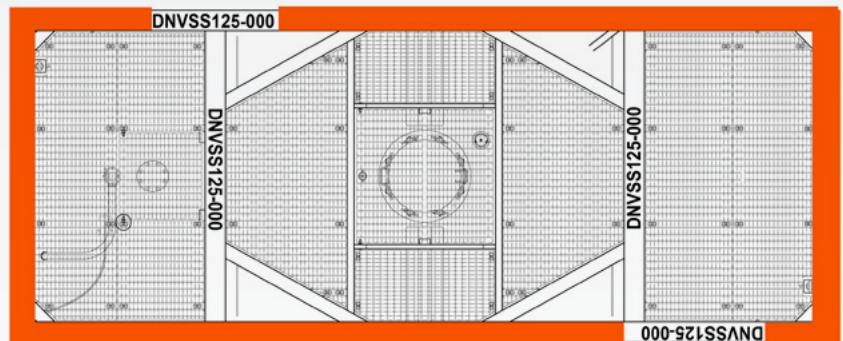
COMMON USES: Secure transportation and storage of drilling, production and completion fluids as well as fuels and other similar liquids compatible with stainless steel.

SPECIFICATIONS

- Designed, tested, constructed, inspected with offshore identification markings to DNV 2.7-1, API RP2A Sec. 2.4.2 C&D, SEPco Document OPS 0055, IMO 860, EN 12079-1, US/DOT & UK DFT
- ASME VIII-1 [NCS] / T11 UN Portable Tank / IMDG - RID/ADR
- ISO - 1493-3:1995 with CSC Safety Approval Plate for 8'x20' Container
- Vessel 316L Stainless Steel
- Test Pressure: 6 BAR - 87 PSI
- Working Pressure: 4 BAR - 58 PSI
- Third-party certification on design, testing, construction and inspection
- ISO Corner Blocks - 8' x 20'
- 125.78 BBL = 5,283 = 20,000 Liters
- Frame Design Temperature is -20C
- Tank Design Temperature is -40C
- 20" Hatch
- One 4" Discharge valve
- Built in ladder and walk way
- Two retractable fall protection anchorage rods
- Fork liftable from two sides
- Three-way discharge closure valve
- Equipped with separate valve for drawing sample of tank contents
- Level gauge included to monitor fluid levels
- Capable of venting air at ground level by way of control handle
- Frame Dimensions:
 - Length: 6,058 mm [238"] [19'10"]
 - Width: 2,438 mm [96"] [8']
 - Height: 2,591 mm [102"] [8'6"]



- 4-Point Lifting Eyes
- Max gross weight: 66,134 lbs. [30,000 KG]
- Weights for EN 12079-1 / IMO 860 /
- SEPco OPS50055 / APR RP 2A / CSC / ISO 1493
- Est. Tare Weight: 16,095 lbs. [7,300 KG]
- Pay Load Weight: 50,045 lbs. [22,700 KG]
- Max Gross Weight: 66,140 lbs. [30,000 KG]
- Weights for DNV 2.7-1 [max limit of spec]
- Est. Tare Weight: 16,095 lbs. [7,300 KG]
- Pay Load Weight: 39,022 lbs. [17,700 KG]
- Max Gross Weight: 55,116 lbs. [25,000 KG]



Make it happen.

www.TigerOffshoreRentals.com | 24/7 Dispatch 1.877.844.3791