

# 25 BBL IM 101 TRANSPORT TANK (S-STYLE)



## ▶ COMMON USES

25 bbl IM 101 is used for secure transportation and storage of drilling, production and completion fluids as well as fuel, waste and other liquids.



## ▶ TECHNICAL DATA

DIMENSIONS	L X W X H	
EXTERNAL (MM)	2438 x 2235 x 2261	
EXTERNAL (FT)	8' x 7'4" x 7'5"	
WEIGHT	KGS	LBS
TARE	2631	5800
PAYLOAD	10864	23950
MAX GROSS WEIGHT (MGW)	13495	29750
CAPACITY	LITERS	GALS
VOLUME	3975	1050

### ADDITIONAL FEATURES

#### FRAME

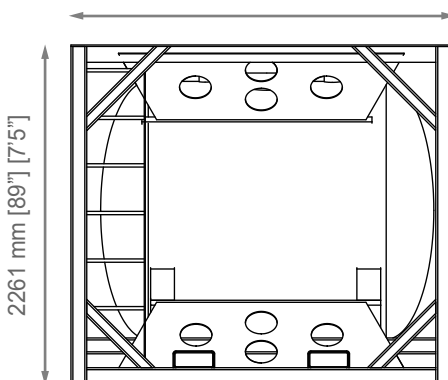
- Designed for Offshore Dynamic Lifting in Accordance with API RR 2A & SEP Co OPS 0055
- Steel Tubing Frame, Forklift Pockets on Both Sides & One End, Four Point Lift System, Top Mounted Catwalk and Stackable - 3 High Empty, 2 High Full

#### VESSEL

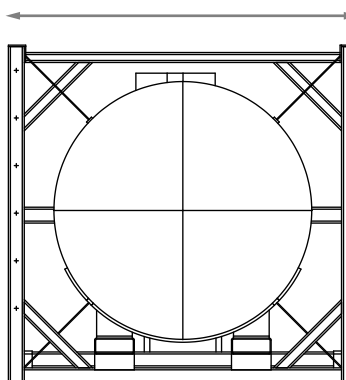
- Constructed with 3/8", SA-36 Plated Cylinder, and 3/8" SA-516, GR 70 PI Heads. Pressure and Vacuum Relief Vent Flow Rate of 4,208 Cubic Ft. of Free Air per Minute as Required by CFR 49, 178.270-11. Set at 25 PSI/6" Vacuum
- Test Pressure 38.6 PSI; Maximum Working Pressure 25PSI/6"; Vacuum Maximum Temperature 200°F
- 3" P/V Vent, 31 PSI, 20" Manway, 3" Male Camlock with Cap, 3" Internal Valve with Shear Section
- Internal Emergency Closure with Remote Trip Cable for Fast Shut Off. Constructed to Meet all Applicable Requirements of the ASME Boiler & Pressure Vessel Code, Section VIII, Div 1 & CFR 49. Configuration Code T8 and meets DOT 3 Serial Mounted Closure Requirement
- Exterior Coatings: Zinc Rich Epoxy Primer, Polyurethane Top Coat
- Interior Coatings: High-Build Epoxy Lining System

## ▶ DRAWINGS

**SIDE VIEW**  
2438 mm [96"] [8']



**FRONT VIEW**  
2235 mm [88"] [7'4"]



**TOP VIEW**

